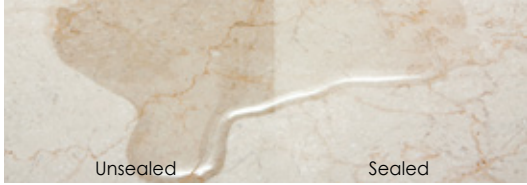
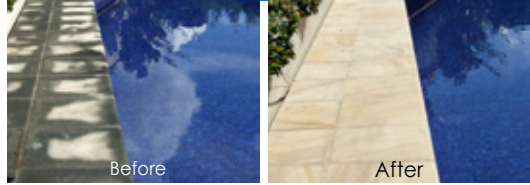


# SPECIALIST SEALERS AND CLEANERS FOR NATURAL STONE, TILE, PAVING, CONCRETE, BRICK AND GROUT

## Protect



## Clean & Restore





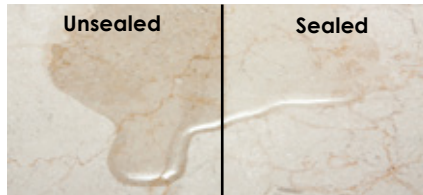
## STAIN-REPELLA™

**Penetrating sealer for natural stone, tiles, pavers, brick, concrete and grout.**

- Superior stain repellence
- Treated surfaces stay looking good & are easier to maintain
- Treated surfaces retain natural color, finish and breathability
- Easy single coat application
- Lasts approximately 5 years depending on surface use and traffic
- Water based formulation
- Use indoors / outdoors; domestic / commercial applications

**Suitable surfaces include:**

- All natural stone, tile, brick, paving, concrete, masonry and grout
- Floors, driveways, patios, paths, building facades, bathrooms, kitchens, stone countertops, pool surrounds, garages, eating and entertaining areas



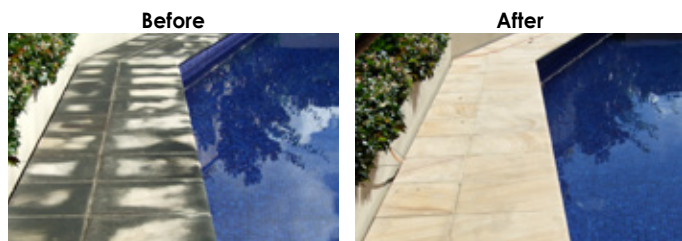
## OXY-KLENZA™ PLUS

**Outdoor surface shampoo for natural stone & other hard surfaces. Heavy duty cleaning, stain removal**

- New power foaming formula
- Triple action foaming cleaner - oxygen + alkaline + detergent
- Cleans and removes stains from oil/grease, mold, leaf marks, food and beverages
- 100% powder concentrate
- Use a single 2.2lb / 1kg bottle for heavy duty cleaning of up to 500 sq ft / 50 sq metre patio
- Can be used to make poultices for removing deep / old stains
- Use outdoors; domestic / commercial applications

**Suitable outdoor surfaces include:**

- All natural stone, tile, grout, paving, brick and other hard surfaces
- Patios, building facades, pool surrounds, public spaces, garages, driveways, eating and entertaining areas





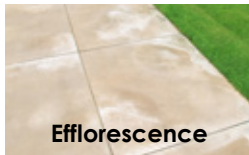
## EFF-ERAYZA™

### Efflorescence, grout haze, rust marks & limescale remover

- Removes efflorescence, grout haze, rust marks, limescale, soap scum, fireplace soot and mortar mess
- Cleaning of paving / poured concrete (neutralize with Oxy-Klenza™ immediately after cleaning and before rinsing)
- The power of dangerous, traditional acids without the noxious fumes
- Slower reaction time - Temporary contact does not burn skin (however, rinse immediately after skin contact)
- Almost zero corrosion of metals (except uncoated aluminium)
- For indoor, outdoor use; domestic / commercial use

#### Suitable surfaces include:

- Non-acid sensitive stones / surfaces, including granite, slate, basalt, brick, ceramic & porcelain tile, terracotta. **WARNING:** will etch marble, limestone, travertine, onyx
- Patios, driveways, garage floors, walls, facades, kitchen, bathrooms, swimming pool surrounds



Efflorescence



Grout haze



Rust mark



## REJUVENATA™ ACTIVE

### Active enzyme cleaner - regular mopping, heavy duty cleaning and stain removal

- 3 types of active enzymes for removing general grime and stains from grease / oils, mold, food and beverages
- Super concentrate - 3 to 4 capfuls in a bucket of water for regular mopping
- Effective heavy duty cleaning or stain removal - use higher concentration
- Use indoors; domestic / commercial applications

#### Suitable indoor surfaces include:

- All natural stone, tiles, bricks, pavers, concrete, masonry and grout
- Floors, patios, bathrooms, kitchens, eating and entertaining areas



## REJUVENATA™ for Countertops

### Cleans and protects natural stone countertops

- Gentle daily cleaner for natural stone / engineered stone countertops
- Contains invisible sealer to enhance protection and make cleaning easier
- PFOA and PFOS free
- Water-based formula

#### Suitable for:

- Natural stone, engineered stone, polished concrete countertops

# PRODUCT SELECTOR

PROTECT	Coverage rate per quart	sq. ft	sq. m
<b>Stain-Repella™</b> Invisible penetrating sealer	Basalt	80	8
	Brick	60	6
	Clay / concrete paver	70	7
	Granite - honed	100	10
	Granite - polished	150	15
	Limestone – honed	70	7
	Marble / porcelain - polished	120	12
	Sandstone	50	5
	Saltillo	50	5
	Slate	80	8
	Terracotta	60	6
	Travertine – honed	70	7
	Travertine - polished	100	10
Grout lines - 300 linear ft / 30 linear m	n/a	n/a	

CLEAN	Dilution rate
<b>Rejuvenata™ Active - Indoors</b> Regular cleaning Heavy duty cleaning	4 capfuls in a standard 2.5 G/10L bucket of warm water
	1/3 bottle in a standard 2.5 G/10L bucket of warm water
<b>Rejuvenata™ Spray - Countertops</b>	Ready to use
<b>Oxy-Klenza™ - Outdoors</b> Heavy duty cleaning	1/3 bottle in a standard 2.5 G/10L bucket of warm water
<b>Eff-Erayza™</b>	Start by mixing the below recommended amount of Eff-Erayza™ in a standard 2.5 G/10L bucket ¾ filled with clean water. Add more Eff-Erayza™ if needed.
Efflorescence	1/2 quart bottle (approx. 500 mL)
Rust stains	
Fireplace soot	
Grout haze	1/4 quart bottle (approx. 250 mL)
Limescale	
Soap scum	
Mortar mess	1 quart bottle (946 mL)
RESTORE	Product
Stain removal	Oxy-Klenza mixed into a poultice. For more information visit <a href="http://www.drytreat.com">www.drytreat.com</a>
	Rejuvenata™ ACTIVE undiluted

HANAFINN™ is made by Dry-Treat, a division of ICP Construction, Inc

Dry-Treat™  
Andover, MA, USA  
1866 667 5119

Dry-Treat™  
Moonee Ponds, VIC, AUS  
1800 675 119

Dry-Treat™ Ltd  
United Kingdom  
0800 096 4760



[info@drytreat.com](mailto:info@drytreat.com)

[www.drytreat.com](http://www.drytreat.com)